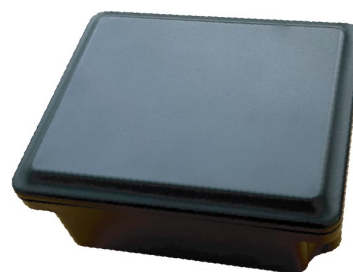


# AssetTrack Mini

The AssetTrack Mini is a small, discreet tracker that is easily concealed. This tracker utilizes the largest and most reliable 4G LTE cellular networks to maintain a stable connection to our servers from virtually anywhere in the United States. The AssetTrack Mini offers up to 5 years of battery life with one location update per day. The tracker allows you to see where your assets are spending the most time, and with easily modified reporting modes, you can increase the frequency of location updates at any time from any location.



With mounting brackets (flange)



Without mounting brackets (flange)

## REPORTING MODES

### Scheduled Timing Report

Reports at preset, user-defined time intervals (default: every 24 hours)

### Low Power Report

Alert when battery is low

### Power Saving Report

Multi year standby at one report per day

### Continuous Reporting

Device can report every 5 minutes for emergency tracking or repo scenarios

## SPECIFICATIONS

### Standby Time

Up to 5 years standby at one report per day

### Size

With Flange: 4.5625in x 2.5in x 1.18in (115.88mm x 63.5mm x 30.16mm )

Without Flange: 3.125in x 2.5in x 1.18in (79.37mm x 63.5mm x 30.16mm )

### Weight

With Flange: 204g

Without Flange: 192g

### Operating Temperature

-30°C ~ +80°C

### Operating Network/Bands

4G LTE Cat-M1 (eMTC): FDD  
B1/B2/B3/B4/B5/B8/B12/B13/B14/B18/B19/B20/  
B25/B26/B27/B28/B66/B85

4G LTE Cat-NB2 (NB-IoT): FDD

B1/B2/B3/B4/B5/B8/B12/B13/B14/B18/B19/B20/  
B25/B26/B27/B28/B66/B85

EGPRS: 850/900/1800/1900MHz

### Sensors

anti-tamper sensor

## INTERFACES/ANTENNAS

### Battery

3.6V, 8100mAh Li-Ion (Non-rechargeable)

### Waterproof Rating

IP67

### Certifications

FCC

### Power Button

Covered switch, not externally accessible

### LED Indicators

Internal Only

### LTE Cellular Antenna

Internal Only

### GPS (GNSS) Antenna

Internal Only

### Mounting

Internal Magnet

Mounting Flange (optional)

### Bluetooth

Coming soon